

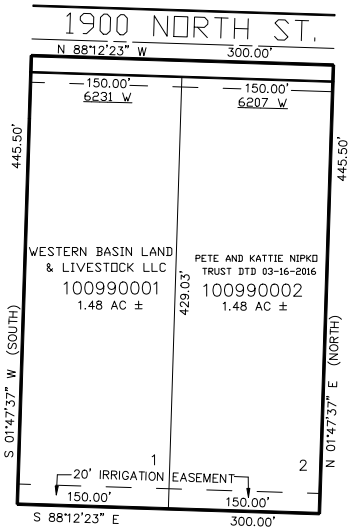
PART OF THE NE.1/4, OF SECTION 6, T.6N., R.3W., S.L.B. & M.  
**STEWART'S ACRES**

TAXING UNIT: 531

IN WEBER COUNTY  
SCALE 1" = 100'

SEE PAGE 28

SEE PAGE 28



SEE PAGE 28

SEE PAGE 28

FOR COMPLETE ENG DATA SEE  
ORIGINAL DEDICATION PLAT IN  
BOOK 56, PAGE 24 OF RECORDS.

10' UTILITY & DRAINAGE EASEMENTS EACH  
SIDE OF PROPERTY LINES AS INDICATED  
BY DASHED LINES EXCEPT AS OTHERWISE  
SHOWN.